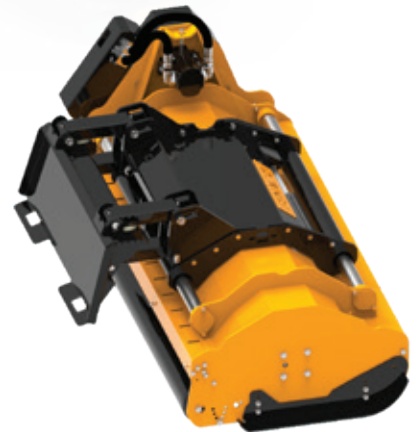
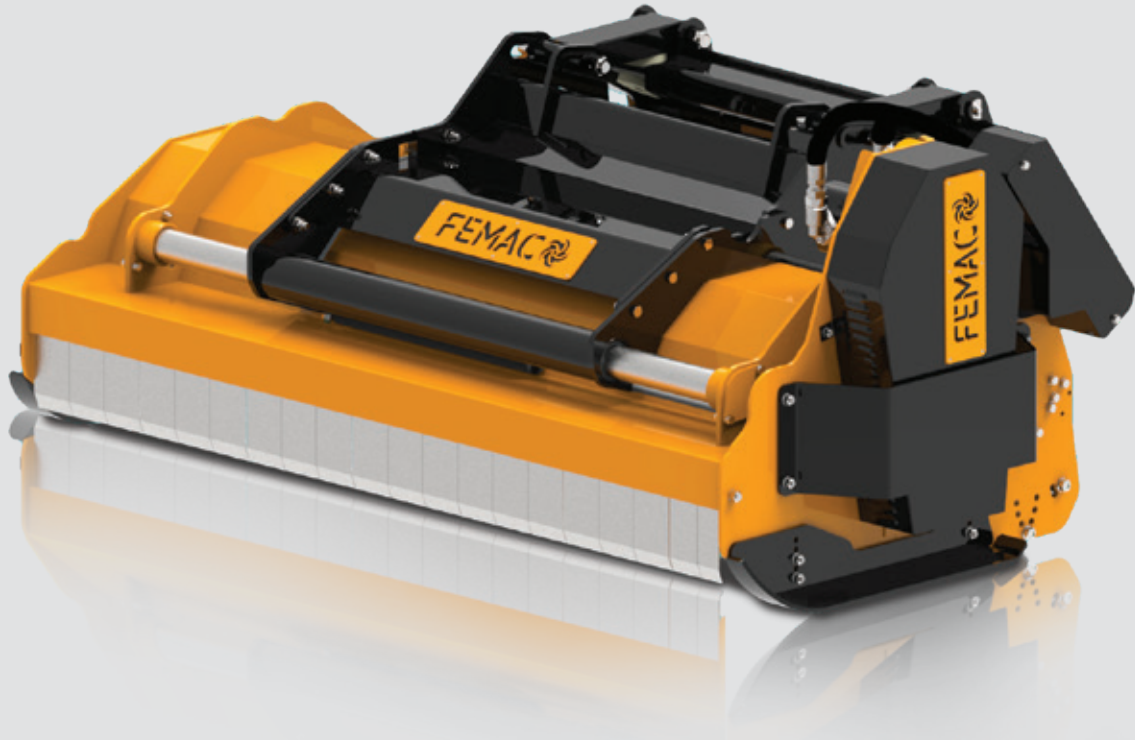


S5

For skid steer loader 50-90 hp



MZ



HF16
Ø max 8 cm
**STANDARD
EQUIPMENT**



KF3
Ø max 6 cm

		S5 MZ160	S5 MZ180	S5 MZ200
	hp	50-90	50-90	50-90
	cm/inch	160 63	180 71	200 79
	cm/inch	182x120x110 72x48x44	202x120x110 80x48x44	222x120x110 87x48x44
	kg/lbs	890 1.962	930 2.050	970 2.138
	cc	27-34-43-51	27-34-43-51	27-34-43-51
	oil - L/min (gal/min)	60-70-90-100 16-22-24-28	60-70-90-100 16-22-24-28	60-70-90-100 16-22-24-28
	bar/psi (min-max)	200-220 2.900-3.200	200-220 2.900-3.200	200-220 2.900-3.200
	transmission	4	4	4
	rotor diameter cm/inch	55	55	55
		18	20	22

Technical features and standard equipment

- Floating self levelling universal hitch.
- MZ Helicoidal Rotor with austempered hammers and cutting blade interchangeable
- Mechanical side shift
- Toothed high-performance V-belts transmission
- Internally reinforced double-case body with interspace
- Protective belts cover
- Inside Rotor Supports with "labyrinth" for the protection of the bearings from the impurities
- Bearings of 1st quality
- Valves block complete with priority valve for adjusting oil flow, anti-shock valve (pressure relief valve), anti-cavitation
- Cast iron gear motor
- Accident prevention protections according to EC directives

Accessories

- Price reduction for fixed type hitch
- Hydraulic side shift
- Diverter valve, to operate the hydraulic side shift
- Hoses kit Lg. 3 meters
- Variable displacement piston motor
- Hitch coupler for articulated backhoe-loaders, backhoe loaders, telescopic loaders

Cast iron hydraulic gear motor range

	CC	27	34	43	51
	CC	27	34	43	51
	oil - L/min gal/min	60 16	70 18	90 24	100 28

Variable displacement piston motor (accessory)

	CC	32/64
	CC	32/64
	oil - L/min gal/min	70-140 18-37
	bar/psi (min-max)	200-250 2.900-3.600

It's recommended to:

- Choose the width of the mulcher like the width of the skid steer loader bucket
- Fit pistons motor if the skid steer loader has HF (High Flow)