









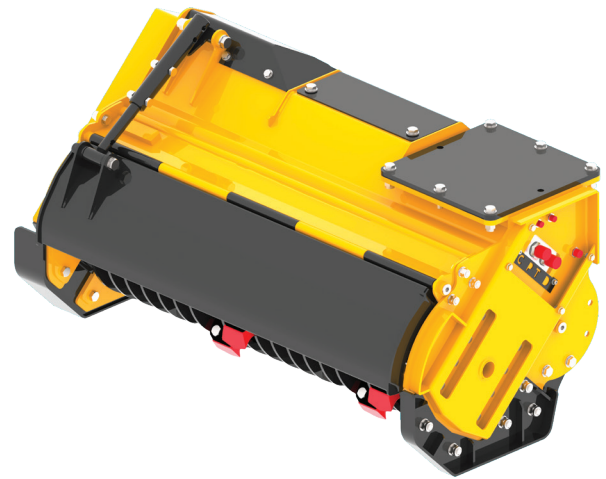


T9 EU

For excavators 4.0-12.0 ton

		T9EU MZ70	T9EU MZ90	T9EU MZ110	T9EU FS70	T9EU FS90	T9EU FS110
 ton		4.0-8.0	4.0-8.0	6.0-10.0	5.0-8.0	6.0-8.0	6.0-12.0
 cm/inch		70 28	90 36	110 43	70 28	90 36	110 43
 cm/inch		85x67x64 33x26x25	105x67x64 41x26x25	124x67x64 49x26x25	85x67x64 33x26x25	105x67x64 41x26x25	124x67x64 49x26x25
 kg/lbs		250 551	290 639	350 772	280 617	340 750	400 882
 cc		16	22-27-34	22-27-34-43-51	22-27-34-43-51	22-27-34-43-51	27-34-43-51
 oil - L/min (gal/min)		30 8	40-50-60 11-14-16	40-50-60 80-100 11-14-16-22-28	40-50-60-80-100 11-14-16-22-28	40-50-60-80-100 11-14-16-22-28	50-60-80-100 14-16-22-28
 bar/psi (min-max)		170-220 2.500-3.200	170-220 2.500-3.200	200-220 2.900-3.200	200-220 2.900-3.200	200-220 2.900-3.200	200-220 2.900-3.200
 transmission		3	3	3	3	3	3
 rotor diameter cm/inch		36 14	36 14	36 14	40 16	40 16	40 16
		10	14	16	12	18	22



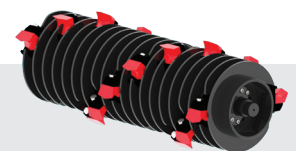
MZ



FS



DF



DFD



HF3
Ø max 8 cm
STANDARD EQUIPMENT



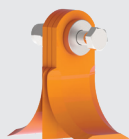
HF17
Ø max 12 cm
STANDARD EQUIPMENT



HF14
Ø max 25 cm
STANDARD EQUIPMENT



HF22
Ø max 20 cm
STANDARD EQUIPMENT



KF3
Ø max 6 cm



HF15
Ø max 20 cm

T9EU DF70	T9EU DF90	T9EU DF110	T9EU DFD70	T9EU DFD90	T9EU DFD110
5.0-12.0	6.0-12.0	6.0-12.0	5.0-12.0	6.0-12.0	6.0-12.0
70 28	90 36	110 43	70 28	90 36	110 43
85x67x64 33x26x25	105x67x64 41x26x25	124x67x64 49x26x25	85x67x64 33x26x25	105x67x64 41x26x25	124x67x64 49x26x25
330 728	380 838	450 992	360 794	415 915	490 1080
22-27-34-43-51	27-34-43-51	27-34-43-51	22-27-34-43-51	27-34-43-51	27-34-43-51
40-50-60-80-100 11-14-16-22-28	50-60-80-100 14-16-22-28	50-60-80-100 14-16-22-28	40-50-60-80-100 11-14-16-22-28	50-60-80-100 14-16-22-28	50-60-80-100 14-16-22-28
200-220 2.900-3.200	200-220 2.900-3.200	200-220 2.900-3.200	200-220 2.900-3.200	200-220 2.900-3.200	200-220 2.900-3.200
3	3	3	3	3	3
37 14,5	37 14,5	37 14,5	38 15	38 15	38 15
21	24	30	14	18	22

Technical features and standard equipment

- MZ Helicoidal Rotor with hammers austempered and cutting blade interchangeable
- FS Helical forestal rotor with 360° rotating hammers
- DF Forestal rotor, fixed teeth
- DFD Rotor, double edge fixed teeth with bite limiter
- Toothed high-performance V-belts transmission
- Internally reinforced double-case body with interspace
- Protective belts cover
- Adjustable front hood, fully openable for higher cutting capacity
- Mechanically adjustable rear hood
- Reinforced side skids
- Inside Rotor Supports with "labyrinth" for the protection of the bearings from the impurities
- Double Row roller adjustable bearings of 1st quality
- Valves block complete with priority valve for adjusting oil flow, anti-shock valve (pressure relief valve), anti-cavitation
- Cast iron gear motor

Accessories

- Mounting hitch (pins version) 1.2-4.0 ton
- Pins kit 1.2-4.0 ton
- Quick hitch 1.2-4.0 ton
- Mounting hitch (pins version) 4.1-8.0 ton
- Pins kit 4.1-8.0 ton
- Quick hitch 4.1-8.0 ton
- Mounting hitch (pins version) 8.1-12.0 ton
- Pins kit 8.1-12.0 ton
- Quick hitch 8.1-12.0 ton
- Hoses kit Lg. 2 meters
- Self-levelling support (+40 kg)
- Hydraulic rotation device (no self-levelling support)
- Valves block deduction, only anticavitation
- Variable displacement piston motor (manual adjustment)
- MT version
- Mini track loader hitch
- Hydraulic hood
- Electrovalve for hydraulic hood

Cast iron hydraulic gear motor range

ton	4.0-6.0	6.0-7.0	7.0-8.0	8.0-10.0	10.0-12.0
CC	22	27	34	43	51
oil - L/min gal/min	40 11	50 14	60 16	80 22	100 28

Variable displacement piston motor (accessory)

ton	8.0-12.0
CC	32/64
oil - L/min gal/min	60/120 16/32